



MONTHLY MEMBERSHIP PROGRESS REPORT

District 324A2

Results as of: 06/30/2018

GMT: N S SANKAR

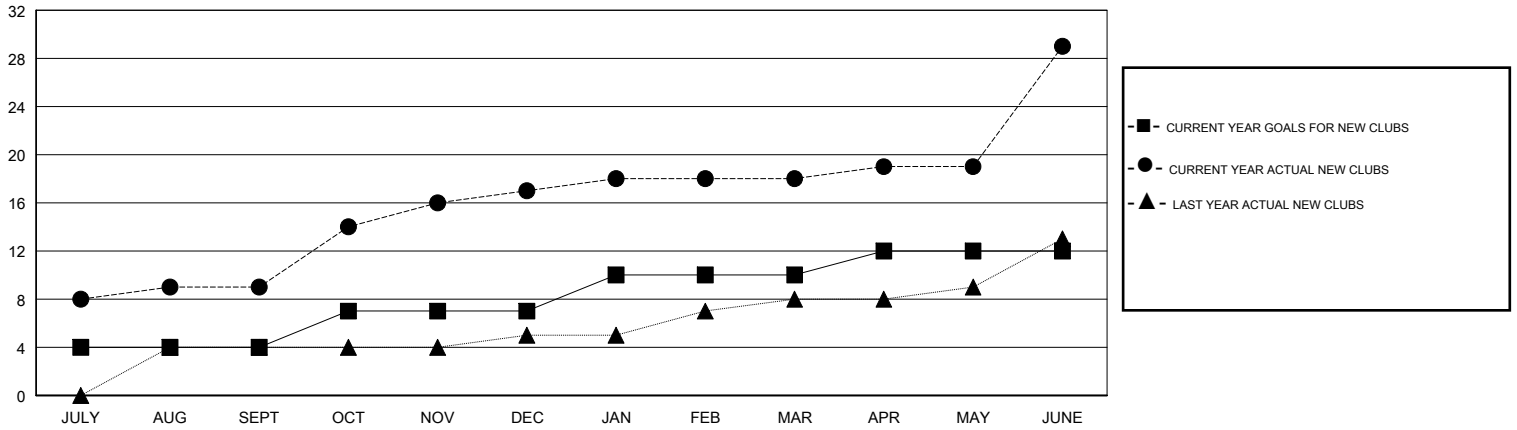
LOCATION INDIA

GMT CA

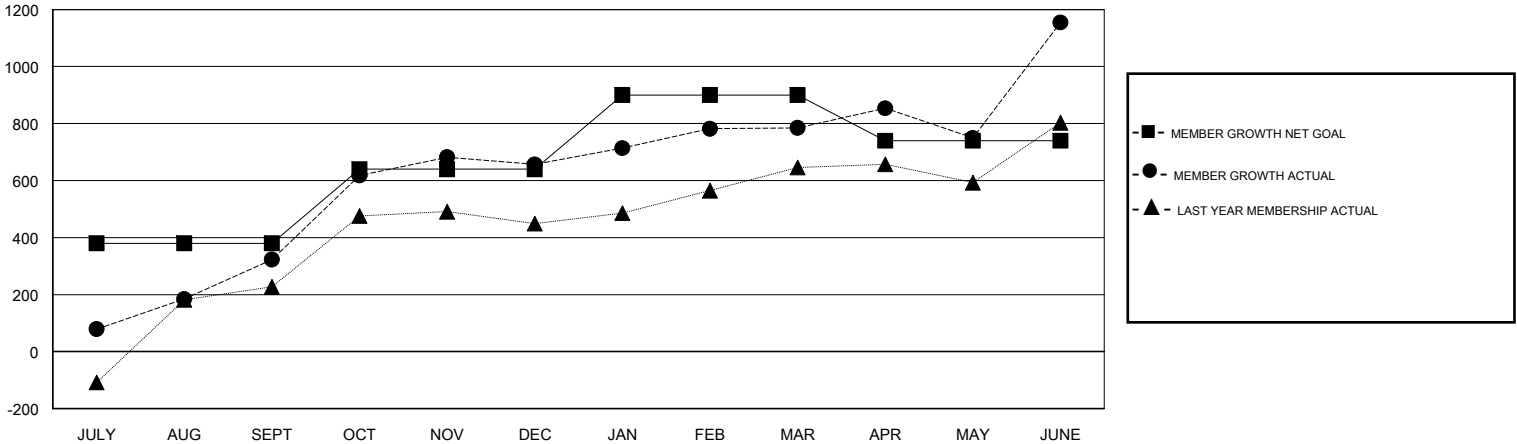
Clubs			
RESULTS FOR 2017-2018			
QUARTER	NEW CLUB GOAL	NEW CLUBS	DROPPED CLUBS
JULY/AUG/SEPT	4	9	0
OCT/NOV/DEC	3	8	2
JAN/FEB/MAR	3	1	0
APR/MAY/JUNE	2	11	0

Members			
RESULTS FOR 2017-2018			
QUARTER	MEMBER GROWTH NET GOAL	MEMBER GROWTH ACTUAL	DROPPED MEMBERS ACTUAL (including transfers)
JULY/AUG/SEPT	380	611	267
OCT/NOV/DEC	260	490	151
JAN/FEB/MAR	260	216	83
APR/MAY/JUNE	-160	1,165	775

GOALS AND ACTUAL NEW CLUBS CUMULATIVE



GOALS AND ACTUAL MEMBERS CUMULATIVE



DROPPED CLUBS: 2	188 CLUBS OF 205 ADDED 1 OR MORE NEW MEMBERS	<u>GENDER DISTRIBUTION</u>	
		MALE	8,244 (90.88%)
		FEMALE	827 (9.12%)
		Women Percentage Fiscal Year Goal: 2%	
<u>DROPPED MEMBERS</u>		TOTAL FAMILY UNIT MEMBERS	0
DECEASED	38	FAMILY MEMBERS PAYING HALF DUES	0
CLUB CANCELLED	42		
OTHER	1,196		
TOTAL	1,276		

[CLICK HERE FOR CUMULATIVE MEMBERSHIP DATA](#)